



TAIGONG
— 泰工减速机 —

江苏泰工机械设备有限公司
Jiangsu Taigong Machinery Equipment Co., Ltd.

地址：江苏省无锡市梁溪区凤凰城29号

电话：0510-80215222

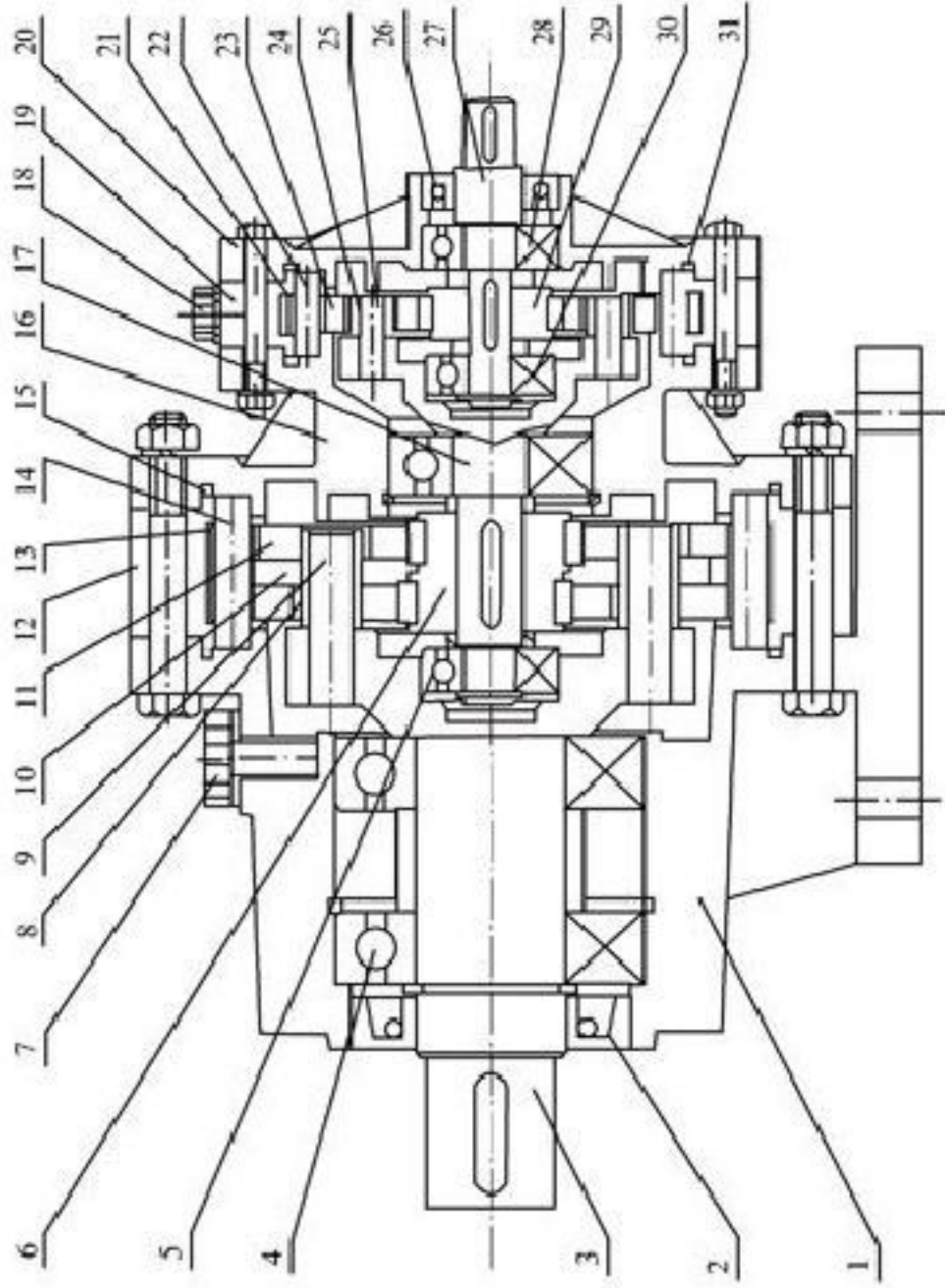
传真：0510-82601236

邮箱：158553680@qq.com

技术支持：13961848999



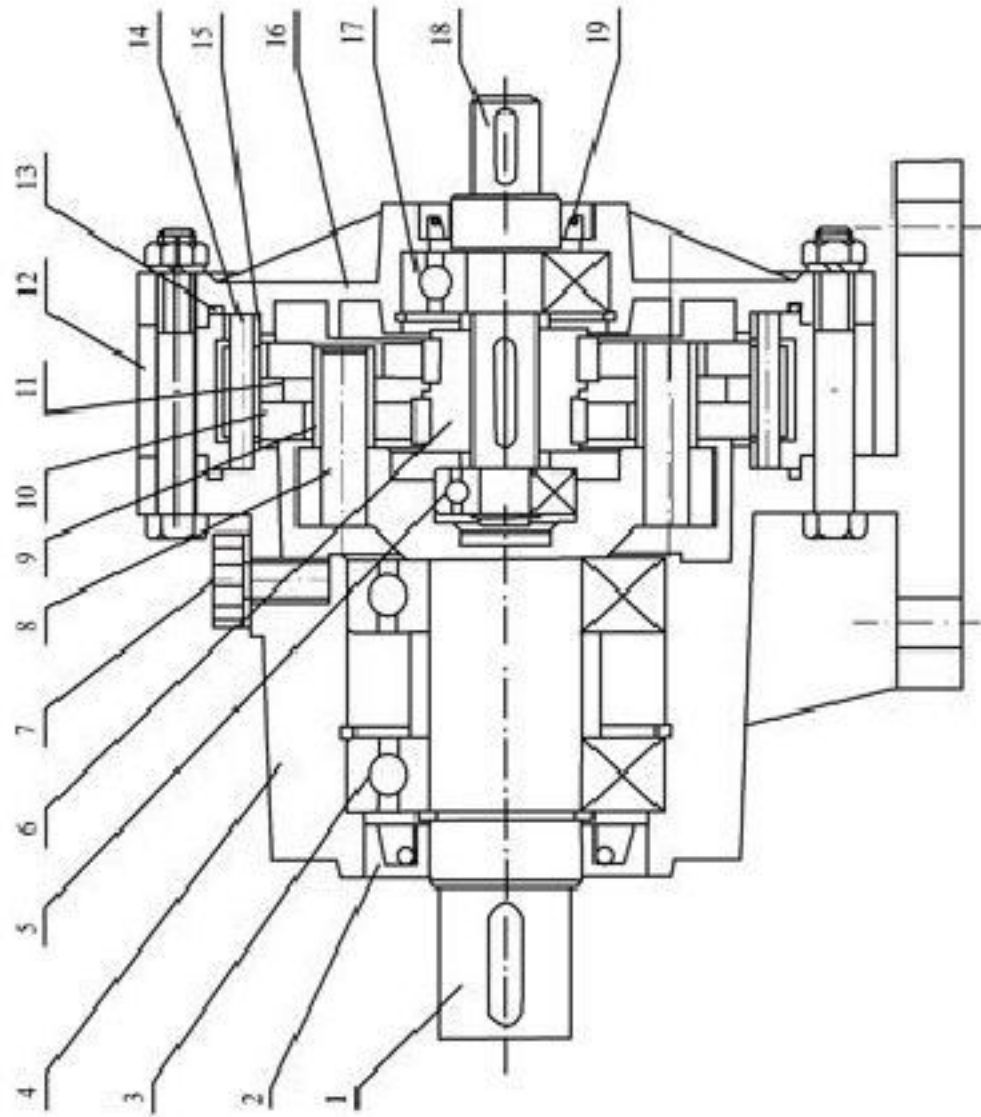
五、减速机结构剖面图



双级减速卧式双轴型结构图

The single class decelerates the horizontal double the stalk type knot the composition

1. 卧式机座 Horizontal base
2. 骨架油封 Framework oil seal
3. 输出轴 Output shaft
4. 滚动轴承 Roll over the bearings
5. 滚动轴承 Roll over the bearings
6. 偏心轴承 Eccentric bearing
7. 通气帽 Abat-vent
8. 销套 Pin sleeve
9. 销轴 Pin shaft
10. 间隔环 Stripper
11. 摆线轮 Cycloidal wheel
12. 针齿壳 Wheel cover
13. 针齿套 Wheel sleeve
14. 针齿销 Wheel pin
15. 密封圈 Seal completely turn
16. 中间盘 Intermediate flange
17. 中间轴 Intermediate shaft
18. 通气帽 Abat-vent
19. 针齿壳 Wheel cover
20. 法兰盘 flange
21. 针齿套 Wheel sleeve
22. 针齿销 Wheel pin
23. 摆线轮 Cycloidal wheel
24. 销套 Pin sleeve
25. 销轴 Pin shaft
26. 骨架油封 Framework oil seal
27. 输入轴 Input shaft
28. 滚动轴承 Roll over the bearings
29. 偏心轴承 Eccentric bearing
30. 滚动轴承 Roll over the bearings
31. 密封圈 Seal completely turn



单级减速卧式双轴型结构图

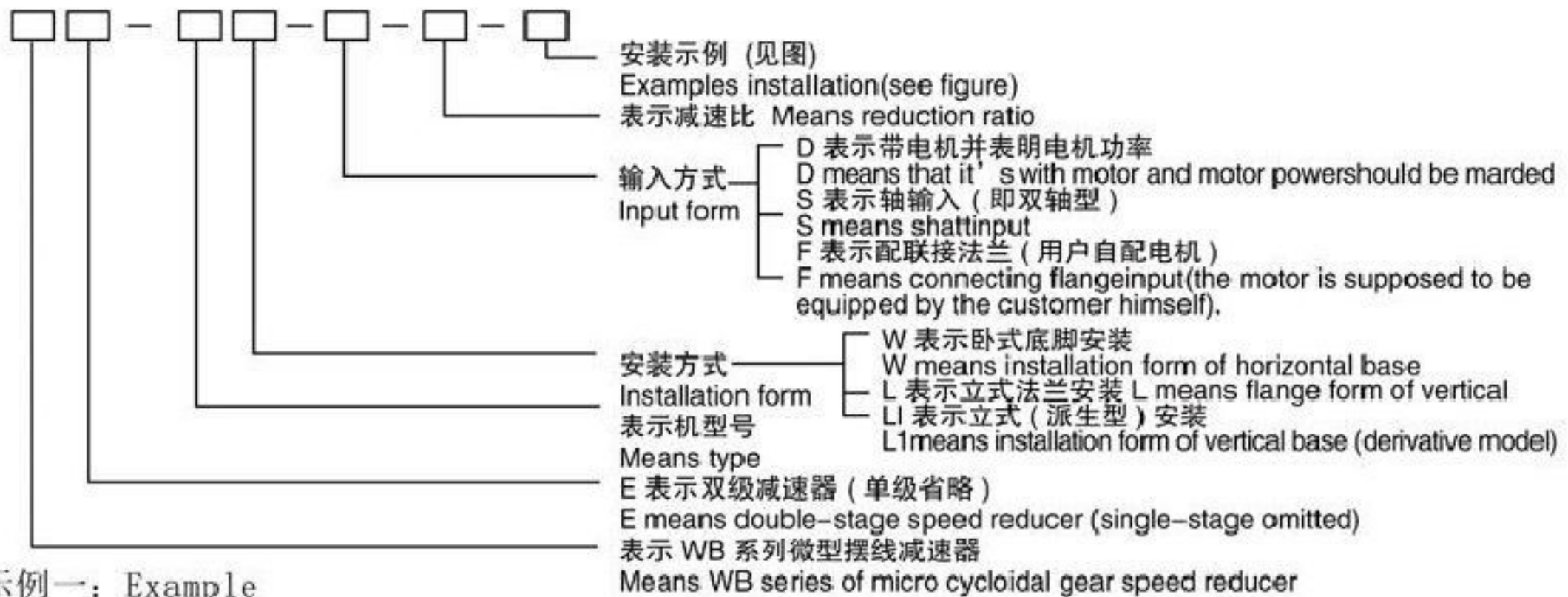
The single class decelerates the horizontal double the stalk type knot the composition

1. 输出轴 Output shaft
2. 骨架油封 Framework oil seal
3. 滚动轴承 Roll over the bearings
4. 卧式机座 Horizontal base
5. 滚动轴承 Roll over the bearings
6. 偏心轴承 Eccentric bearing
7. 通气帽 Abat-vent
8. 销轴 Pin shaft
9. 销套 Pin sleeve
10. 摆线轮 Cycloidal wheel
11. 间隔环 Stripper
12. 针齿壳 Wheel cover
13. 密封圈 Seal completely turn
14. 针齿销 Wheel pin
15. 针齿套 Wheel sleeve
16. 法兰盘 flange
17. 滚动轴承 Roll over the bearings
18. 输入轴 Input shaft
19. 骨架油封 Framework oil seal

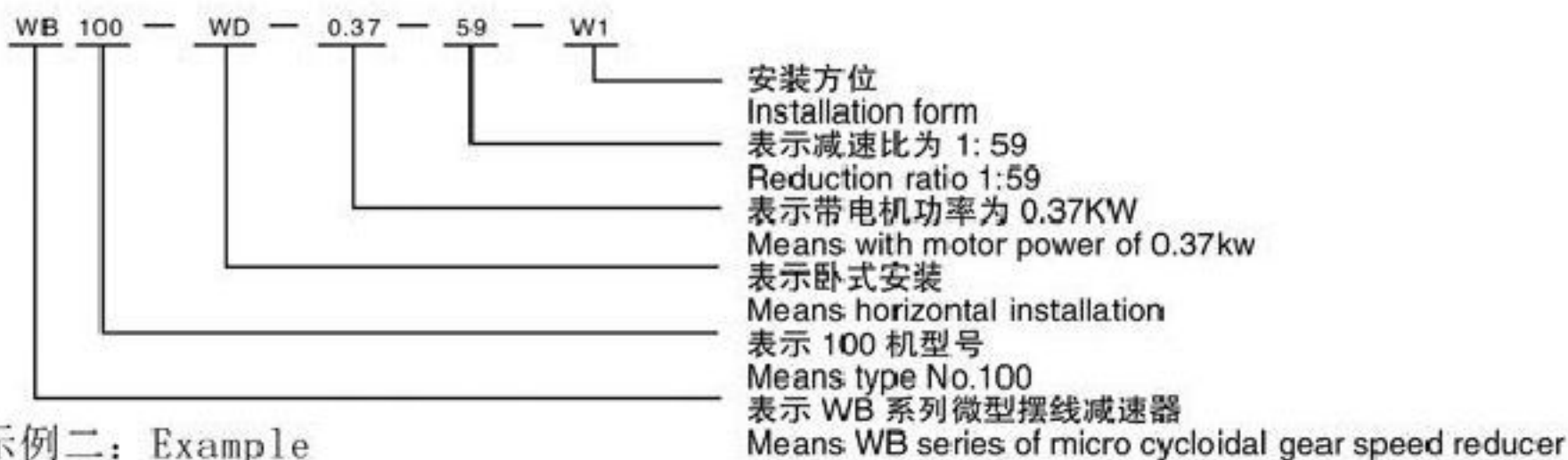
六、机型表示方法



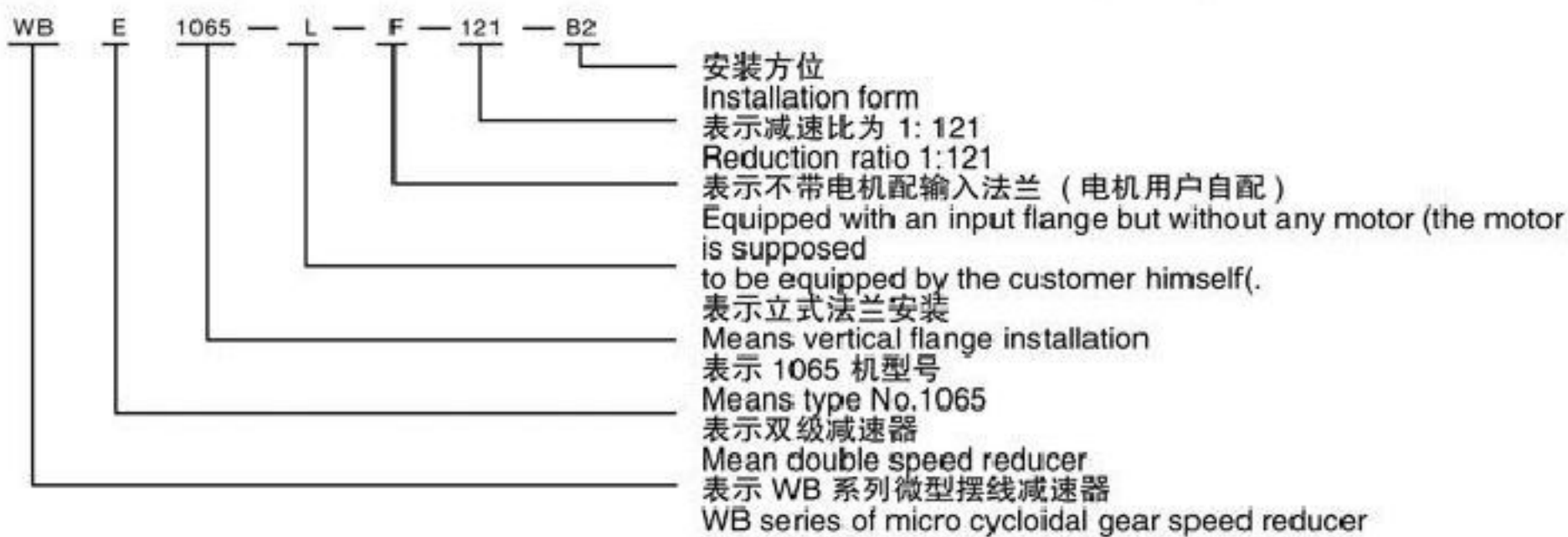
机型表示方法: Model expression

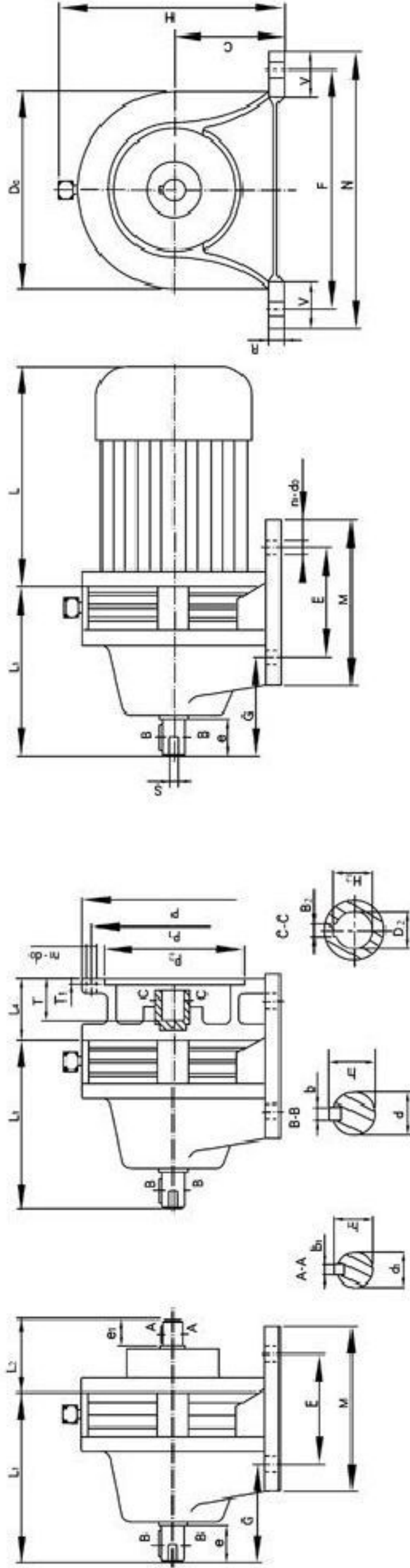


示例一: Example



示例二: Example





WB-WS

WB-WF

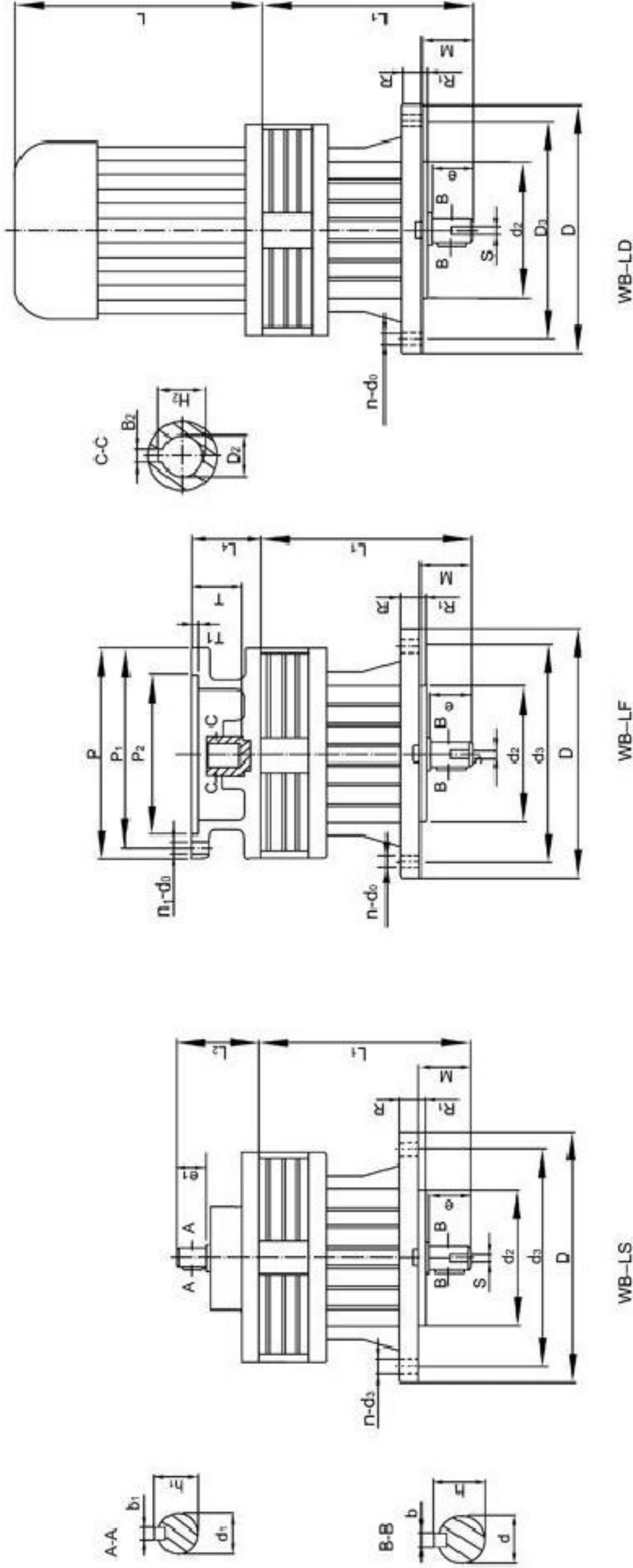
WB-WD

WB 系列单级卧式 W (S.F.D.) 外型安装及联接尺寸

Appearance, installation and connection sizes of WBseries of single-stage horizontal W(S.F.D) 表一 Table 1

机型号 Model	外型尺寸 Appearance size					安装尺寸 Installation size					输入轴尺寸 Shaft input size					法兰输入尺寸 Flange input size					输出轴尺寸 Output shaft size																		
	H	M	N	DC	L ₁	L	C	G	R	E	F	V	n~d ₀	d _{1,106}	e ₁	b ₁	h ₁	L ₂	P	P ₁	P ₂₀₀₇	T	T ₁	n ₁ ~d ₀	D ₂₀₀₇	B ₂	H ₂	L ₄	d ₁₀₆	e	b	h	s						
WB65	120	90	150	102	93	60	46	8	60	130	20	4~7	10	16	3	11	40																						
WB85	140	100	175	125	110	70	54	10	70	150	30	4~9	12	16	3	13	42		140	115	95	25	4	4~10	11	4	12.7	38	14	24	5	16	M5						
WB100	155	110	185	140	125	80	63	12	80	160	32	4~9	14	20	4	16	50		140	115	95	25	4	4~10	11	4	12.7	38	18	25	6	20.5	M6						
WB120	195	120	185	168	163	100	93	15	90	150	36	4~11	15	22	5	17	52		200	165	130	42	5.5	4~15	19	6	21.7	65	30	35	8	33	M8						
WB150	235	160	250	200	200	120	115	18	120	210	40	4~15	20	30	6	22	60		200	165	130	42	5.5	4~15	19	6	21.7	70	35	55	10	38	M8						

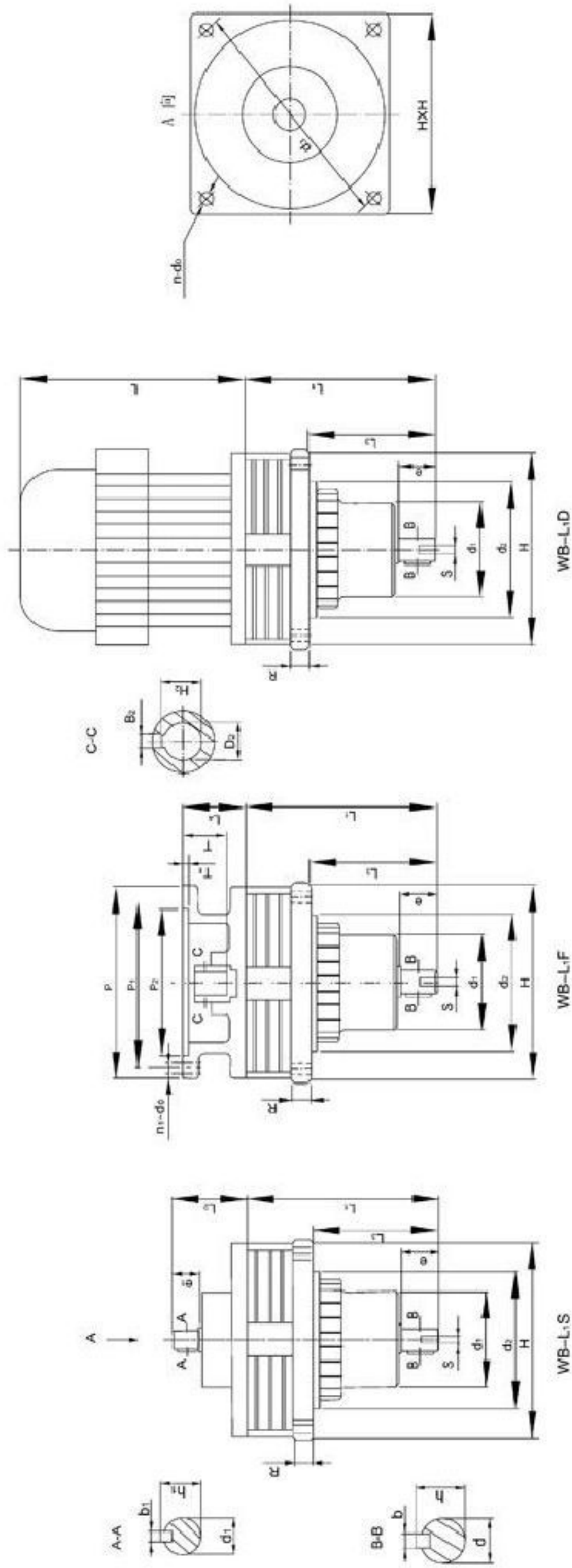
See the Motor table page
详见电机一览表102页



WB 系列单级立式L (S.F.D.) 外型安装及联接尺寸
 Appearance, installation and connection sizes of WB series of single-stage vertical L (S.F.D.) 表二 Table II

机型号 Model	外型尺寸 Appearance size			安装尺寸 Installation size				输入轴尺寸 Shaft input size				法兰输入尺寸 Flange input size						输出轴尺寸 Output shaft size												
	D	L ₁	R	L	d ₃	n~d ₀	R ₁	M	d _{2H6}	d _{1H6}	e ₁	b ₁	h ₁	L ₂	P	P ₁	P _{2H7}	T	T ₁	n ₁ ~d ₀	D _{2H7}	B ₂	H ₂	L ₄	d ₉₈	e	b	h	s	
WB65	120	93	8		100	4~7	2.5	24	65	10	16	3	11	40												12	20	4	13.5	M4
WB85	140	110	9		120	4~9	3	28	85	12	16	3	13	42	140	115	95	25	4	4~10	11	4	13	38	14	24	5	16	M5	
WB100	160	125	10		134	4~9	3	30	100	14	20	4	16	50	140	115	95	25	4	4~10	11	4	13	38	18	25	6	20.5	M6	
WB120	190	163	12		160	4~11	3	39	140	15	22	5	17	52	160	130	110	32	5	4~10	14	5	16	42	14	30	35	8	33	M8
WB150	230	200	14		200	4~13	4	60	170	20	30	6	23	60	200	165	130	52	5.5	4~15	19	6	22	70	24	35	55	10	38	M8
															250	215	180	62	5.5		28	8	31	75	28					

See the motor table page
 详见电机一览表102页

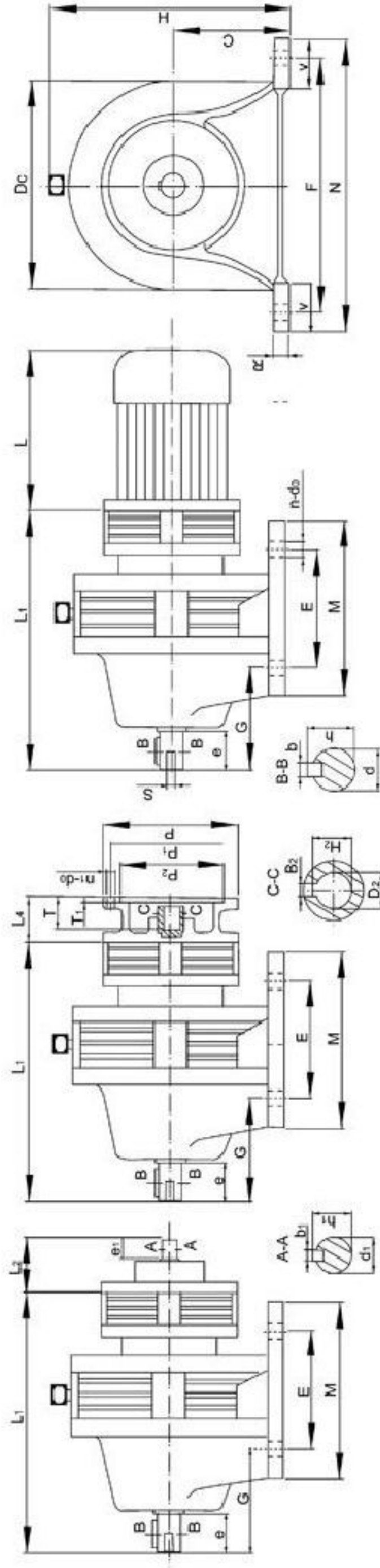


WB 系列单级立式L1 (S.F.D.)外型安装及联接尺寸

Appearance, installation and connection sizes of WB series of single-stage vertical L1(S.F.D.) 表三 Table III

机型号 Model	外型尺寸 Appearance size				安装尺寸 Installation size				输入轴尺寸 Shaft input size				法兰输入尺寸 Flange input size							输出轴尺寸 Output shaft size											
	H	d ₁	L ₁	R	L	d ₃	n~d ₀	d _{2a8}	L ₃	d _{1,16}	e ₁	b ₃	h ₁	L ₂	P	P ₁	P _{2a7}	T	T ₁	n ₁ ~d ₀	D _{2a7}	B ₂	H ₂	L ₄	d ₁₆	e	b	h	s		
WB65	105	50	95	9	125	4~7	65	65	65	10	16	3	11	40												12	20	4	13.5	M4	
WB85	125	55	110	10	140	4~9	85	82	82	12	16	3	13	42	140	115	95	25	4	4	4~10	11	4	13	38	14	24	5	16	M5	
WB100	140	65	125	12	160	4~9	100	93	93	14	20	4	16	50	140	115	95	25	4	4	4~10	11	4	13	38	18	25	6	20.5	M6	
WB120	170	90	163	12	185	4~11	120	118	118	15	22	5	17	52	160	130	110	32	5	5	4~10	14	5	16	42						
WB150	210	115	200	14	240	4~13	150	145	145	20	30	6	23	60	200	165	130	42	5.5	5.5	4~15	19	6	22	65	30	35	8	33	M8	
															250	215	180	62	5.5	5.5		28	8	31	75						

See the motor table page
详见电机一览表102页



WBE-WS

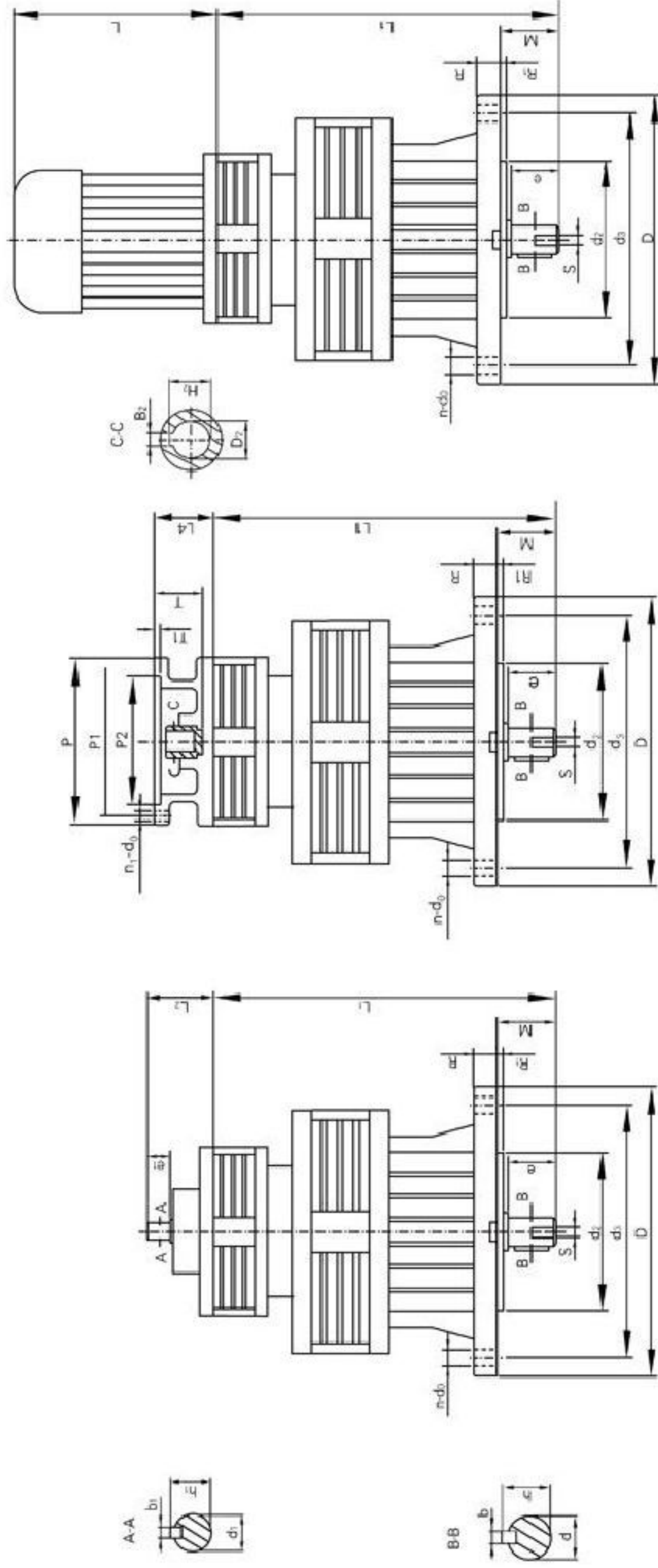
WBE-WF

WBE-WD

WB 系列双级卧式W (S.F.D.)外型安装及联接尺寸
Appearance, installation and connection sizes of WB series of double-stage horizontal W (S.F.D.) 表四 Table IV

机型号 Model	外型尺寸 Appearance size					安装尺寸 Installation size							输入轴尺寸 Shaft input size					法兰输入尺寸 Flange input size							输出轴尺寸 Output shaft size								
	H	M	N	DC	L	C	G	R	E	F	V	$n \sim d_0$	$d_{1\mu 6}$	e_1	b_1	h_1	L_2	P	P_1	$P_{2\mu 7}$	T	T_1	$n_1 \sim d_0$	$D_{2\mu 7}$	B_2	H_2	L_4	$d_{1\mu 6}$	e	b	h	s	
WBE1065	155	110	185	140	185	80	63	12	80	160	25	4~9	10	16	3	11	40												18	25	6	20.5	M6
WBE1285	195	120	185	168	230	100	93	15	90	150	30	4~11	12	16	3	13	42	140	115	95	25	4	4~10	11	4	13	38	30	35	8	33	MB	
WBE1510	235	160	250	200	295	120	115	18	120	210	40	4~15	14	20	4	16	50	140	115	95	25	4	4~10	11	4	13	38	35	55	10	38	MB	
																		160	130	110	32	5		14	5	16	42						

See the motor table page
电机规格表 | 规格102页



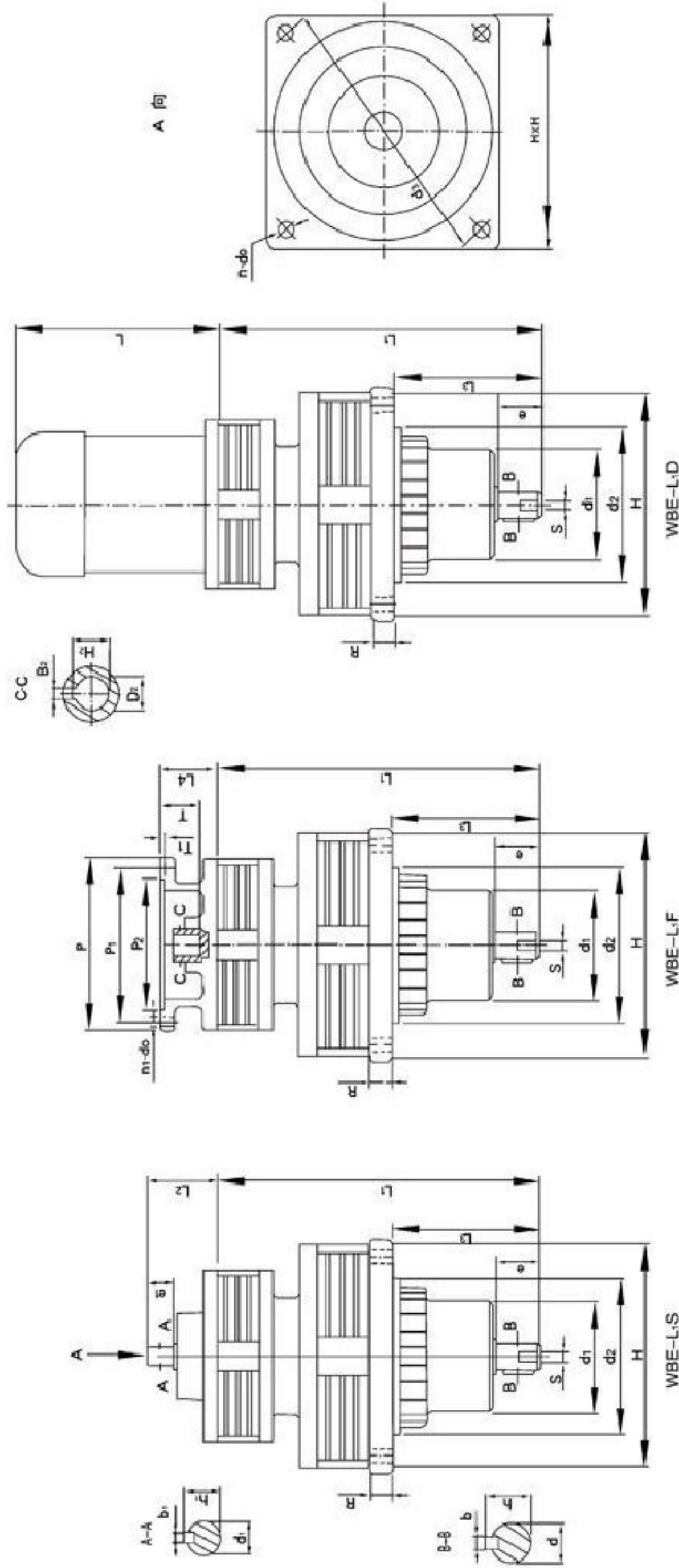
WBE-LS

WBE-LF

WBE-LD

WB 系列双级立式L (S.F.D.) 外型安装及联接尺寸
Appearance, installation and connection sizes of WB series of double-stage vertical L (S.F.D.) 表五 Table V

机型号 Model	外型尺寸 Appearance size			安装尺寸 Installation size						输入轴尺寸 Shaft input size					法兰输入尺寸 Flange input size						输出轴尺寸 Output shaft size									
	D	L ₁	R	L	d ₃	n ~ d ₀	R ₁	M	d ₂₄₈	d ₁₊₆	e ₁	b ₁	h ₁	L ₂	P	P ₁	P ₂₄₇	T	T ₁	n ₁ ~ d ₀	D ₂₄₇	B ₂	H ₂	L ₄	d ₁₊₆	e	b	h	s	
WBE1065	160	185	10	See the motor table page 详见电机 附表 102页	134	4~9	3	30	100	10	16	3	11	40												18	25	6	20.5	M6
WBE1285	190	230	10		160	4~11	3	39	140	12	16	3	13	42	140	115	95	25	4	4	4~10	11	4	13	38	30	35	8	33	M8
WBE1510	230	295	14		200	4~13	4	60	170	14	20	4	16	50	160	130	110	32	5	4	4~10	14	5	16	42	35	55	10	38	M8



WB 系列双级立式L₁ (S.F.D.) 外型安装及联接尺寸

Appearance, installation and connection sizes of WB series of double-stage vertical L (S.F.D.)

表六 Table VI

机型号 Model	外型尺寸 Appearance size					安装尺寸 Installation size					输入轴尺寸 Shaft input size					法兰输入尺寸 Flange input size					输出轴尺寸 Output shaft size									
	H	d ₅	L ₁	R	L	d ₃	n~d ₀	d _{2a8}	L ₃	d ₁₊₈	e ₁	b ₁	h ₁	L ₂	P	P ₁	P _{2H7}	T	T ₁	n ₁ ~d ₀	D _{2H7}	B ₂	H ₂	L ₄	d ₁₊₆	e	b	h	s	
WBE1065	140	65	185	12	160	4~9	100	93	10	16	3	11	40												18	25	6	20.5	M6	
WBE1285	170	90	230	12	185	4~11	120	118	12	16	3	13	42	140	115	95	25	25	4	4	4~10	11	4	13	38	30	35	8	33	M8
WBE1510	210	115	295	14	240	4~13	150	140	14	20	4	16	45	160	130	110	32	32	5	4	4~10	14	5	16	42	35	55	10	38	M8

See the motor table page
请见电机规格表

八、WB 系列单级减速器传动能力选型参数表

Model, specification and selection reference for WB series of single-stage speed reducer

表一 Table I

机型号 Model	配置电机功率 Power of motor disposed KW	减速比 Reduction ratio													
		5	7	9	11	17	23	29	35	43	59	71	87	101	121
		T2 输出转矩 n.m T2 output torque													
WB65	0.04-4p				2.70	4.20	5.60	7.20	8.55	10.50	14.50				
	0.06-4p				4.00	6.30	8.55	10.50	12.80	15.80	21.70				
	0.09-4p				6.05	9.35	12.70	15.90	19.20	23.70					
	0.12-4p				8.00	12.50	16.70	21.30	25.70						
4p输入时, 其输出转速(r/min) Output revolution(r/min)when 4p input					127	82	60	48	40	32	24				

表二 Table II

机型号 Model	配置电机功率 Power of motor disposed KW	减速比 Reduction ratio													
		5	7	9	11	17	23	29	35	43	59	71	87	101	121
		T2 输出转矩 n.m T2 output torque													
WB85	0.09-4p			5.00	6.05	9.35	12.7	15.96	19.2	23.7	32.5	39.2			
	0.12-4p			6.60	8	12.5	16.7	21.3	25.7	31.7	43.4	52.2			
	0.18-4p			9.90	12.1	18.7	25.4	31.2	38.6	47.4					
	0.25-4p			13.80	16.9	26.1	35.4	44.5	53.7						
	0.37-4P			20.40	24.9	38.5	52.1								
4p输入时, 其输出转速(r/min) Output revolution(r/min)when 4p input				155	127	82	60	48	40	32	24	20			

表三 Table III

机型号 Model	配置电机功率 Power of motor disposed KW	减速比 Reduction ratio														
		5	7	9	11	17	23	29	35	43	59	71	87	101	121	
		T2 输出转矩 n.m T2 output torque														
WB100	0.18	4p		7.70	9.30	12.10	18.70	25.40	31.20	38.60	47.40	65.00	78.40	96.00		
		6p		11.20	14.50	17.70	27.40	37.00	46.70	56.40	69.30	95.00	114.0			
	0.25	4p		10.70	13.80	16.90	26.10	35.40	44.50	53.70	66.00	90.00	108.0	133.0		
		6p		15.60	20.00	24.50	37.90	51.30	64.60	78.00	95.80	130.0				
	0.37	4p		15.90	20.40	24.90	38.50	52.10	65.70	79.30	97.20	133.0				
		6p		23.20	29.80	36.40	56.20	76.10	96.00	116.0						
	0.55	4p		23.60	30.30	37.10	57.40	77.60	97.20	117.0						
		6p		34.40	44.30	54.10	83.60	113.0								
	0.75	4p		32.20	41.40	50.50	78.30	106.0	133.0							
		6P		46.90	60.40	73.80	114.0									
	4p输入时, 其输出转速(r/min) Output revolution(r/min)when 4p input			200	155	127	82	60	48	40	32	24	20	16		
	6p输入时, 其输出转速 (r/min) Output revolution(r/min)when 6p input			137	105	86	56	41	33	27	22	16	13	11		

表四 Table IV

机型号 Model	配置电机功率 Power of motor disposed KW		减速比 Reduction ratio													
			5	7	9	11	17	23	29	35	43	59	71	87	101	121
			T2 输出转矩n.mT2 output torque													
WB120	0.25	4p	7.60	10.70	13.80	16.90	26.10	35.40	44.50	53.70	66.00	90.00	108.0	133.0	155.0	
		6p	11.2	15.60	20.00	24.50	37.90	51.30	64.60	78.00	95.80	130.0	158.0	194.0		
	0.37	4p	11.3	15.90	20.40	24.90	38.50	52.10	65.70	79.30	97.20	133.0	161.0	191.0		
		6p	16.5	23.20	29.80	36.40	56.20	76.10	96.00	116.0	142.0	195.0				
	0.55	4p	16.8	23.60	30.30	37.10	57.40	77.60	97.20	117.0	145.0					
		6p	24.6	34.40	44.30	54.10	83.60	113.0	142.0	172.0						
	0.75	4p	23.0	32.20	41.40	50.50	78.30	106.0	133.0	161.0						
		6p	33.5	46.90	60.40	73.80	114.0	154.0	194.0							
	1.1	4p	33.7	47.20	60.50	74.00	114.0	155.0	195.0							
		6p	49.2	68.90	88.50	108.0	167.0									
1.5-4p		46.0	64.5	82.9	100	156										
4p 输入时, 其输出转速 (r/min) Output revolution(r/min)when 4p input			280	200	155	127	82	60	48	40	32	24	20	16	14	
6p 输入时, 其输出转速 (r/min) Output revolution(r/min)when 6p input			188	137	105	86	56	41	33	27	22	16	13	11		

表五 Table V

机型号 Model	配置电机功率 Power of motor disposed KW		减速比 Reduction ratio													
			5	7	9	11	17	23	29	35	43	59	71	87	101	121
			T2 输出转矩n.mT2 output torque													
WB150	0.37	4p	11.3	15.90	20.40	24.90	38.50	52.10	65.70	79.30	97.20	133.0	161.0	191.0	229.0	270
		6p	16.5	23.20	29.80	36.40	56.20	76.10	96.00	116.0	142.0	195.0	235.0			
	0.55	4p	16.8	23.60	30.30	37.10	57.40	77.60	97.20	117.0	145.0	199.0	239.0			
		6p	24.6	34.40	44.30	54.10	83.60	113.0	142.0	172.0	211.0					
	0.75	4p	23.0	32.20	41.40	50.50	78.30	106.0	133.0	161.0	198.0	271.0				
		6p	33.5	46.90	60.40	73.80	114.0	154.0	194.0	234.0						
	1.1	4p	33.7	47.20	60.50	74.00	114.0	155.0	195.0	236.0						
		6p	49.2	68.90	88.50	108.0	167.0	226.0								
	1.5	4p	46.0	64.5	82.9	100	156	211.0	266.0							
		6p	67.0	93.80	120.0	147.0	227.0									
	2.2	4p	67.4	94.50	121.0	148	229.0									
		6p	98.4	137.7	177	216										
	3.0	4p	92.0	128.0	165	202										
	4p 输入时, 其输出转速 (r/min) Output revolution(r/min)when 4p input			280	200	155	127	82	60	48	40	32	24	20	16	14
6p 输入时, 其输出转速 (r/min) Output revolutions(r/min)when 6p input			188	137	105	86	56	41	33	27	22	16	13			

九、WB 系列双级减速器传动能力选型参数表

Model, specification and selection reference for WB series of double-stage speed reducer

表六 Table VI

机型号 Model	配置电机功率(KW) Power of motor disposed	减速比 Reduction ratio													
		121 11*11	187 11*17	289 17*17	385 11*35	473 11*43	595 17*35	731 17*43	989 23*43	1255 35*35	1849 43*43	2537 43*59	3481 59*59	5133 59*87	5959 59*101
		T2 输出转矩n.mT2output torque													
WBE1065	0.04-4p	26.3	40.7	63	83.2	103	129	160	215	267	403	558	765	1129	
	0.06-4p	40	61	94.4	125	154	194	239	323	400	604	837	1148	1693	
	0.09-4p	59.4	92	143	198	232	292	358	485	601	908	1243	1705	2515	
	0.12-4p	79.2	121	186	254	309	388	478	647	801	1209	1649	2262	3336	
4p输入时其输出转速 (r/min) Output revolution when 4p input		11.5	7.5	4.8	3.6	3	2.3	1.9	1.4	1.1	0.7	0.55	0.4	0.27	

表七 Table VII

机型号 Model	配置电机功率(KW) Power of motor disposed	减速比 Reduction ratio													
		121 11*11	187 11*17	289 17*17	385 11*35	473 11*43	595 17*35	731 17*43	989 23*43	1255 35*35	1849 43*43	2537 43*59	3481 59*59	5133 59*87	5959 59*101
		T2 输出转矩n.mT2output torque													
WBE1285	0.09-4p	59.4	92	143	198	232	292	358	485	601	908	1243	1705	2515	108
	0.12-4p	79.2	121	186	254	309	388	478	647	801	1209	1649	2262	3336	3900
	0.18-4p	108	183	283	377	464	583	716	969	1201	1815	2486	3411	5030	5839
	0.25-4p	164	255	394	525	645	812	997	1350	1672	2524	3424	4699	6929	8044
	0.37-4p	244	376	583	776	953	1200	1473	1978	2470	3728	5074	6962	10266	11918
4p输入时, 其输出转速 (r/min) Output revolution when 4p input		11.5	7.5	4.8	3.6	3	2.3	1.9	1.4	1.1	0.7	0.55	0.4	0.27	0.23

表八 Table VIII

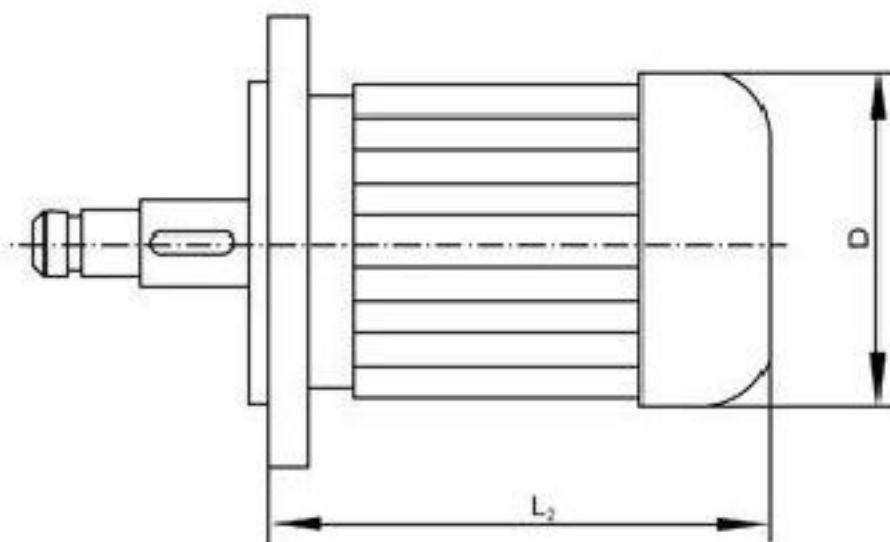
机型号 Model	配置电机功率(KW) Power of motor disposed	减速比 Reduction ratio													
		121 11*11	187 11*17	289 17*17	385 11*35	473 11*43	595 17*35	731 17*43	989 23*43	1255 35*35	1849 43*43	2537 43*59	3481 59*59	5133 59*87	5959 59*101
		T2 输出转矩n.mT2output torque													
WBE1510	0.18-4p	108	183	283	377	464	583	716	969	1201	1815	2486	3411	5030	5839
	0.25-4p	164	255	394	525	645	812	997	1350	1672	2524	3424	4699	6929	8044
	0.37-4p	244	376	583	776	953	1200	1473	1978	2470	3728	5074	6962	10266	11918
4p输入时, 其输出转速 (r/min) Output revolution when 4p input		11.5	7.5	4.8	3.6	3	2.3	1.9	1.4	1.1	0.7	0.55	0.4	0.27	0.23

注: 兰线下的T2输出转矩数值(N.m)已大于该型减速的许用转矩值。

Note: T2 output torque value (N.m) under blue line has been more than the allowable torque value of this type of speed reduction.

十、WB 系列减速器常用电机及电机外型尺寸一览表

Common motors for WB series of speed reducers and motor appearance size table



表九 Table IX

电机类型 Motor type	功率(KW) Power(KW)	转速(r/min) Rotational speed(r/min)	电压(V) V oltage(V)	L_2	D	配置相应机型 Corresponding mach- ine type disposed		
Three-phase asynchronous motor 三相异步电动机	0.04	1400	380	130	95	65 1065		
	0.06	1400						
	0.09	1400		170	115	65 85 1065 1285		
	0.12	1400						
	0.18	1400		190	130	85 100 1285		
	0.25	1400						
	0.37	1400		225	150	100 120 1510		
	0.55	1400						
	0.75	1400		260	175	120 150		
	1.10	1400						
	1.50	1400						
	2.20	1400		320	205	150		
	3.00	1400						
	单相电容运转电动机 Single-phase permanent-capacitor motor	0.18		950	220	190	130	85 100 1285
		0.25		950				
		0.37		950		225	150	100 120 1510
		0.55		950				
		0.75		950		285	175	120 150
		1.10		950				
		1.50		950				
单相电容启动电动机 Single-phase capacitor-start motor		0.04	1400	220		130	95	65 1065
	0.06	1400						
单相电阻启动电动机 Single-phase resistance-start motor	0.09	1400	220	170	115	65 85 1065 1285		
	0.12	1400						
单相电阻启动电动机 Single-phase resistance-start motor	0.18	1400	220	195	130	85 100 1285		
	0.25	1400						
	0.37	1400		225	150	100 120 1510		
	0.55	1400						
SZ型微型直流伺服电动机 Model SZ micro DC servo motor	0.75	1400	110 220	285	195	120 150		
	0.05	1400		160	95	65 1065		
	0.08	1400		180	95	65 85 1065 1285		
	0.123	1400		200	115	85 100 1285		
	0.185	1400		230				
0.355	1400	270	135	100 120 1510				
制动电动机 Brake motor	0.55	1400	380	375	165	120 150		
	0.75	1400						
	1.10	1400		410	180	120 150		
	1.50	1400						
	2.20	1400		430	180	120 150		
	3.00	1400						